

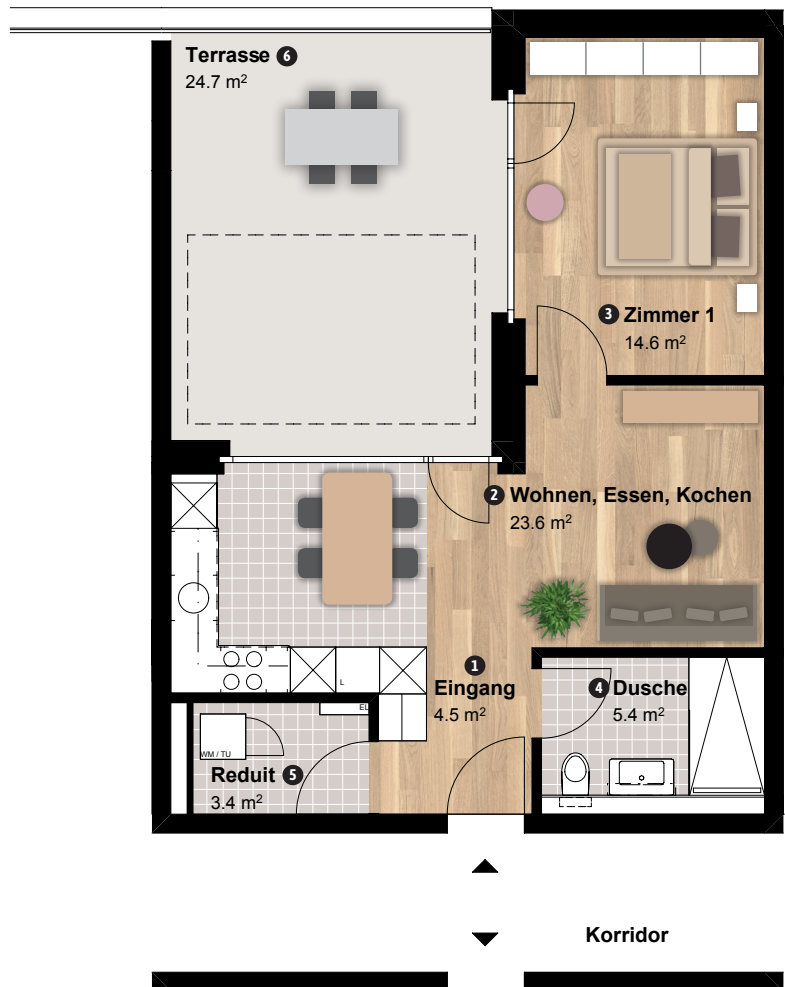
# LUWA

Das Areal für alle

STOCKHOLM

## 2.5-ZIMMERWOHNUNG / ROOM APARTMENT «möbliertes Wohnen / furnished apartment»

Luzernerstrasse 15a/15b / 3. Obergeschoss



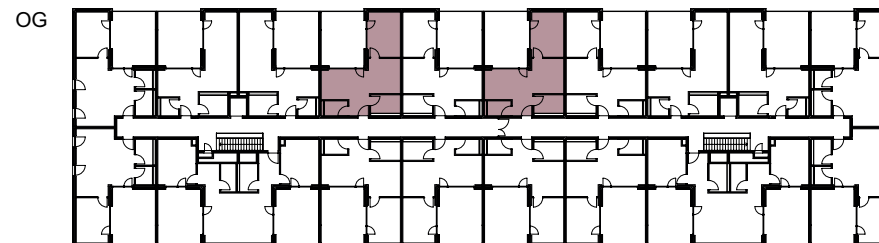
- ① Entrance
- ② Living, Dining, Kitchen
- ③ Bedroom
- ④ Bathroom
- ⑤ Storage
- ⑥ Terrace

Stockholm

15b.3.4 / 15a.3.1

Nettowoohnfläche / net living area 51.5 m<sup>2</sup>

Nettofläche Terrasse / net area terrace 24.7 m<sup>2</sup>



	15b					15a				
3.OG	b.3.1	b.3.2	b.3.3	b.3.4	b.3.5	a.3.1	a.3.2	a.3.3	a.3.4	a.3.5
	b.3.9	b.3.8		b.3.7	b.3.6	a.3.9	a.3.8	a.3.7		a.3.6
2.OG	b.2.1	b.2.2	b.2.3	b.2.4	b.2.5	a.2.1	a.2.2	a.2.3	a.2.4	a.2.5
	b.2.10	b.2.9	b.2.8	b.2.7	b.2.6	a.2.10	a.2.9	a.2.8	a.2.7	a.2.6



Massstab 1:100

